

Cycling holidays

The Netherlands | 2024-2025

The Cycling Holidays Factsheet is part of the Dutch National Recreational Cycling Report 2025. This report highlights trends by comparing with previous years and, where possible, offers further insights into regional and provincial differences.

Cycling while on holiday

2.4 miljoen

In 2024/2025, Dutch residents (16+) took a total of **4.8 million** cycling holidays within The Netherlands.



Base camp cycling holiday:

a vacation where you take several bike trips from a single holiday location.

3.4 miljoen

Base camp cycling holidays
in The Netherlands



Cycle touring: a vacation where

you travel from one accommodation to the next by bike, staying in different places each night.

1.4 miljoen

Cycle tours
in The Netherlands



Plans for the coming year

93% of cycle tourists definitely (47%) or possibly (46%) plan to go on another cycle tour in the Netherlands.



94% of base camp cycling tourists definitely (53%) or possibly (41%) plan to take another base camp cycling holiday in the Netherlands.

Share of first-time cycling tourists

27% of those on cycling tours were taking their very first trip.



For **11%** it was the first time touring in their own country.



Estimated spending

Calculation by Fietsplatform/De Afdeling Onderzoek based on Kien Onderzoek, Monitor Fietsvakanties 2025 and CBS, Vakantieonderzoek 2024.



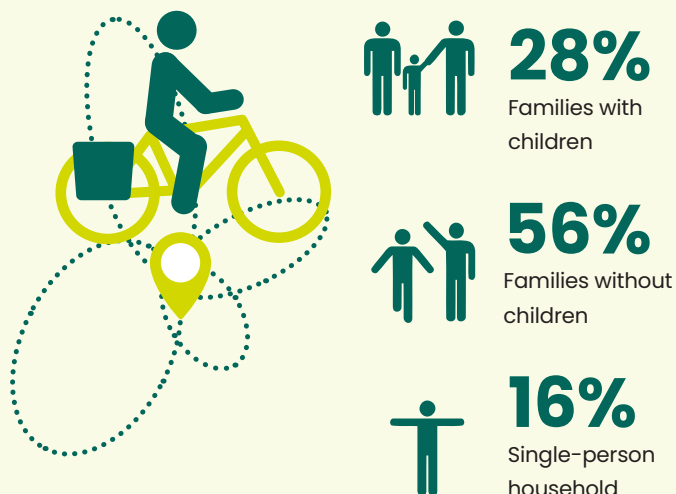
 	Number of cyclingvacations	Number of days**	Spending per person per day	Total expenses (euros)**
Base camp cycling holidays	3.4 mln	4.3 (3.3 nights)	53* euro	768 mln
Cycle Tours	1.4 mln	4.6 (3.6 nights)	77 euro	505 mln

* CBS, Vakantieonderzoek 2024.

** Due to a calculation error, the number of days and expenditures were underestimated in the September 2025 edition of this publication. This has been corrected in the January 2026 edition.

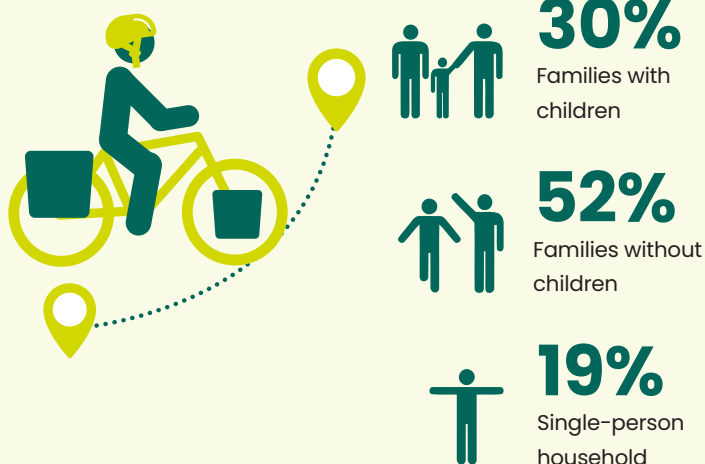
Cycling holidaymakers profile (16+)

Base camp cycling holidaymaker

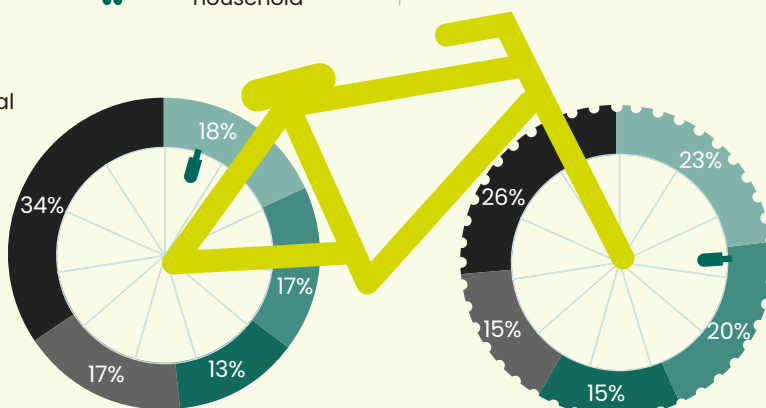


- The age distribution of cycling holidaymakers is similar to that of the general Dutch population
- Ages 16–30: slightly underrepresented
- Ages 30–39: slightly overrepresented
- 56% of cycling holidays: households without children under 18

Cycle tourists



- The age profile of cycle tourists differs from that of the Dutch population
- Ages 30–39: highly overrepresented, also a relatively high share aged 16–30
- Ages 60 and up: underrepresented
- 52% of cycling trips: households without children under 18



Under 30 years old Ages 30–39 Ages 40–49 Ages 50–59 Age 60 and older

LF route usage

(Long-distance cycle route)

47% of Dutch **cycle tourists** used an LF route in 2024/2025.

In total, people in The Netherlands made **667,000** **cycle tours** along LF routes.



Top 3 most popular LF routes

Calculation by Fietsplatform/De Afdeling Onderzoek based on Kien Onderzoek, Monitor Fietsvakanties 2025 and Kien Onderzoek, Monitor Fietsvakanties – verdieping LF-routes 2025.



Reasons for choosing LF routes

Top reasons to use an LF route during a cycling tour



67%

The convenience of a single, well-marked and continuous route for long-distance cycling

60%

Positive experiences on previous trips using LF routes

46%

LF routes are the best fit for multi-day cycling adventures

© VERSION JANUARY 2026 – FIETSPLATFORM (DUTCH CYCLE PLATFORM)

THIS FACTSHEET WAS MADE POSSIBLE WITH FINANCIAL SUPPORT FROM THE MINISTRY OF INFRASTRUCTURE & WATER MANAGEMENT AND THE PROVINCES.

SOURCES: KIEN ONDERZOEK, MONITOR FIETSVAKANTIES 2025 | KIEN ONDERZOEK, MONITOR FIETSVAKANTIES – VERDIEPING LF-ROUTES 2025 | CBS, VAKANTIEONDERZOEK, 2024 | CBS, BEVOLKING EN HUISHOUDENS, 2025.

DESIGN: BURO 28 LEONIE NENNIE – FACTSHEET COMPILATION: DE AFDELING ONDERZOEK MONICA WAGENAAR

